



**Models**  
**15B045FE**  
**15B070FE**  
**15B096FE**  
**15B120FE**  
**15B145FE**  
**15B170FE**  
**15B195FE**  
**15B245FE**  
**15B295FE**

## **15B SERIES II**

**Cast Iron Gas Fired Boilers  
For Forced Hot Water**

### **REPAIR AND REPLACEMENT PARTS**

#### Ordering Instructions

Order Parts through your nearest supplier.

When ordering parts, obtain Model Number from data plate on your boiler.

Include following information when ordering.

Part Number \_\_\_\_\_

Part Description \_\_\_\_\_

Boiler Model Number \_\_\_\_\_

Boiler Serial Number \_\_\_\_\_

#### **Manufactured by:**

**ECR International, Inc.**

*2201 Dwyer Avenue,  
Utica, NY 13501*

*web site: [www.ecrinternational.com](http://www.ecrinternational.com)*

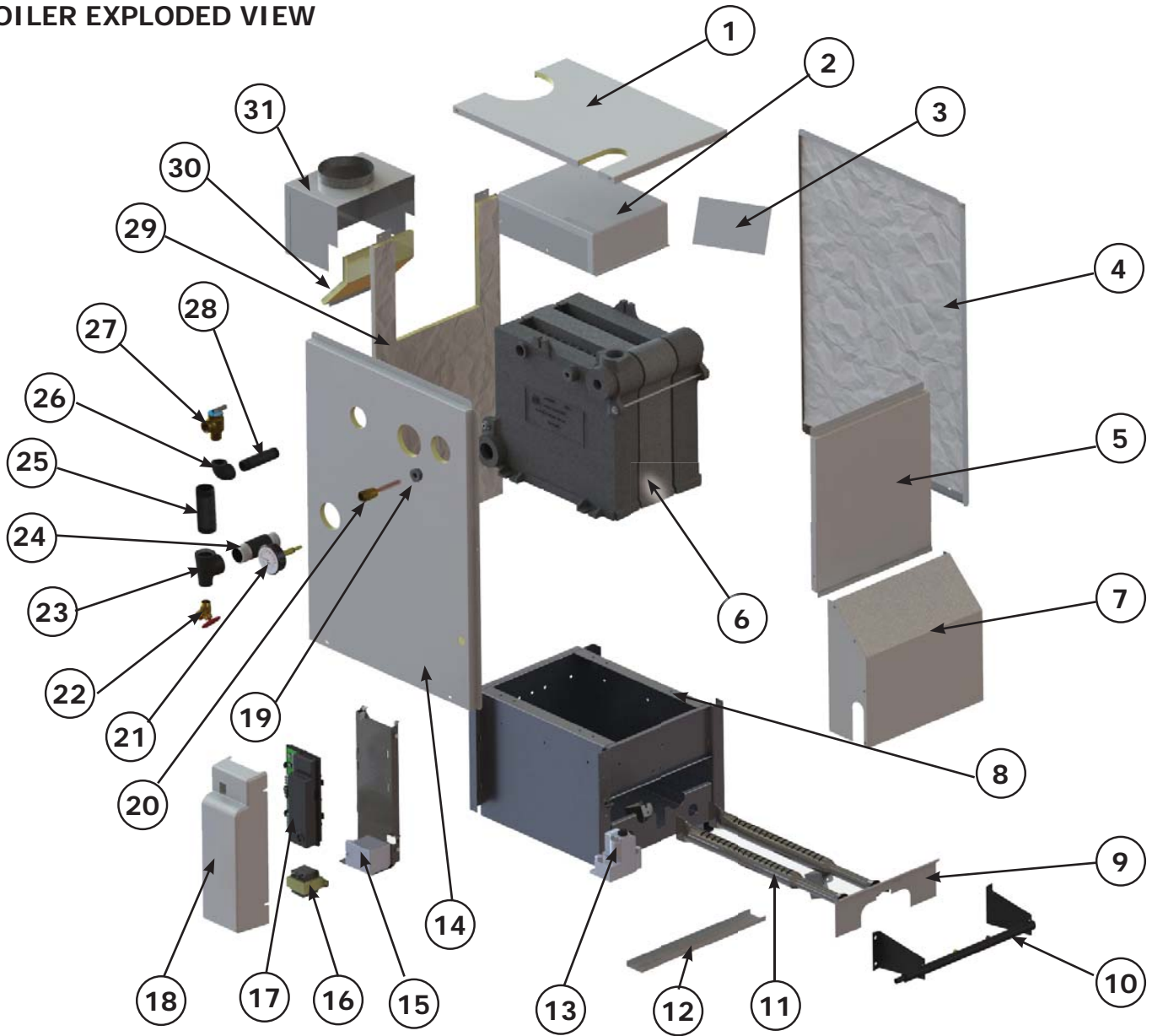


An ISO 9001-2008 Certified Company

P/N 240009025, Rev. A [03/2012]

## REPLACEMENT PARTS

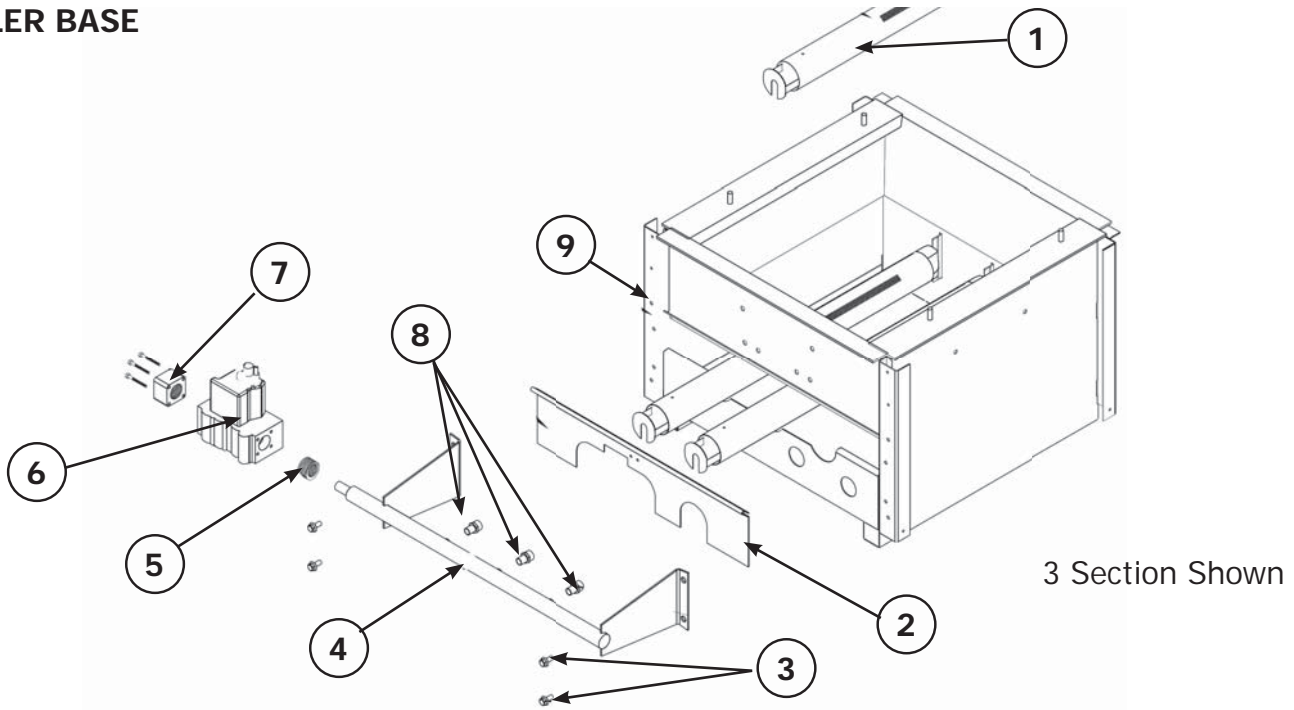
### BOILER EXPLODED VIEW



Item	Description	Item	Description	Item	Description
1	Jacket Top	13	Gas Valve	25	Pipe Adapter
2	Flue Collector	14	Jacket Side Left	26	Pipe Elbow
3	Baffle	15	Control Panel	27	Safety Relief Valve
4	Jacket Side Right	16	Transformer	28	Pipe Adapter
5	Jacket Front Upper	17	Control	29	Jacket Back
6	Heat Exchanger	18	Control Cover	30	Jacket Back to Flue
7	Jacket Front Lower	19	Pipe Bushing	31	Draft Hood
8	Base	20	Well		
9	Burner Door	21	Temperature Pressure Gauge		
10	Manifold	22	Drain Valve		
11	Burner Tube	23	Pipe Tee		
12	Tray	24	Pipe Adapter		

## REPLACEMENT PARTS

### BOILER BASE

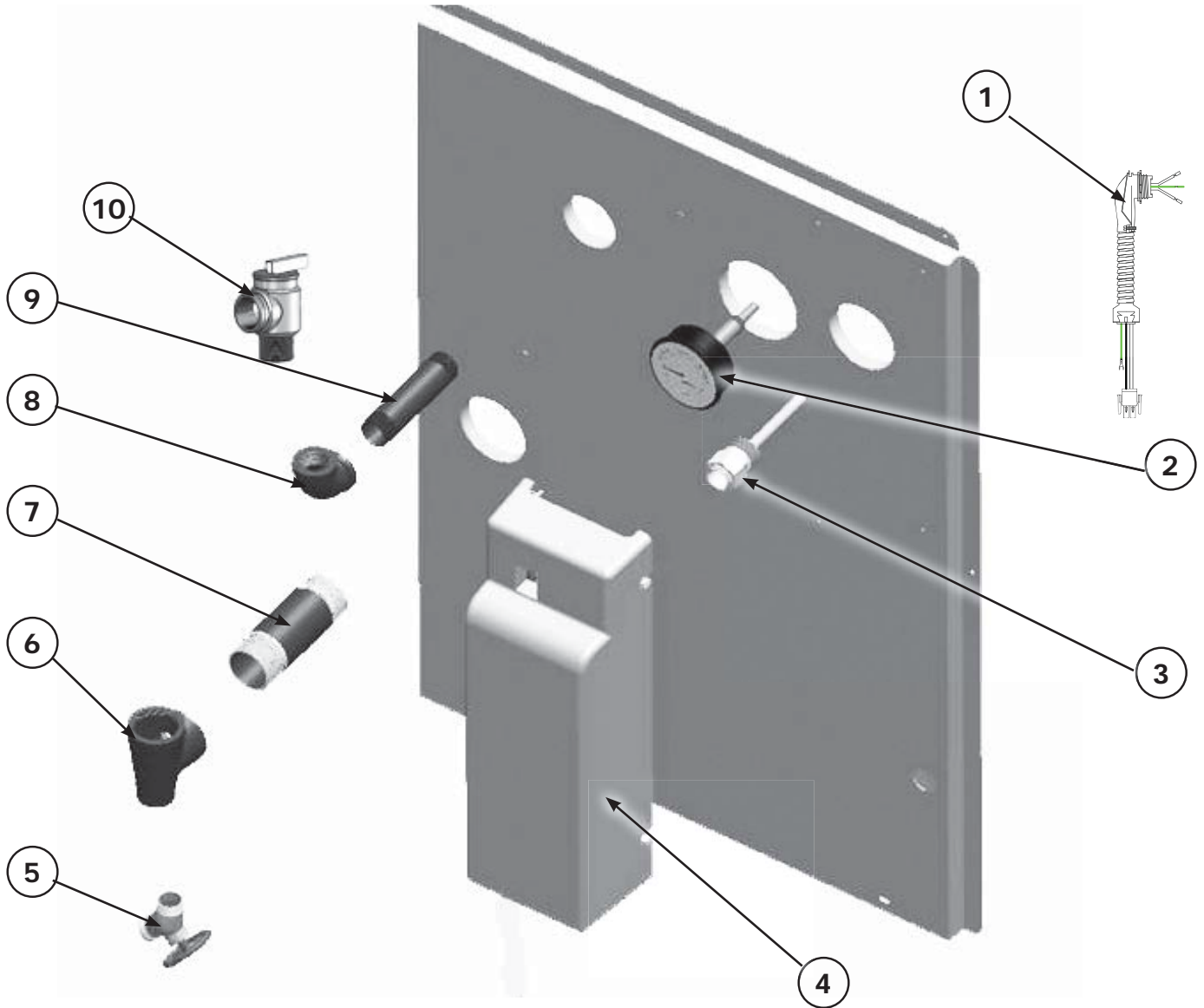


Item	Part No.	Description	QTY.
1	240005543	Burner Tube 1½" (045)	1
		Burner Tube 1½" (070, 096)	2
		Burner Tube 1½" (120, 145)	3
		Burner Tube 1½" (170, 195)	4
		Burner Tube 1½" (245)	5
		Burner Tube 1½" (295)	6
2	3261201	Burner Door (045)	1
	32611405	Burner Door (070, 096)	
	109008519	Burner Door (120, 145)	
	109008520	Burner Door (170, 195)	
	109008521	Burner Door (245)	
	109008522	Burner Door (295)	
3	HW-005.01	Screw ¼ - 20 x ½ Self Tap	4
4	356-2-1.01	Manifold (045)	1
	356-2-1.02	Manifold (070,096)	
	356-2-1.03	Manifold (120, 145)	
	356-2-1.04	Manifold (170, 195)	
	356-2-1.05	Manifold (245)	
	356-2-1.06	Manifold (295)	
5	VG-006.00	Internal Bushing ¾ x ½ (ALL LP)	1
6	VG01101	Gas Valve, Spark Nat (045-145)	1
	VG01102	Gas Valve, Spark Nat (170-195)	
	VG01103	Gas Valve, Spark Nat (245-295)	
	VG01104	Gas Valve, Spark LP (045-295)	
7	VG01601	Straight Flange - ¾" NPT (170, 195, 245, 295 - LP ONLY)	1

Item	Part No.	Description	QTY.
1	240007406	Orifice 3.2mm, Nat. (096)	2
		Orifice 3.2mm, Nat. (145)	3
		Orifice 3.2mm Nat. (195)	4
		Orifice 3.2mm, Nat. (245)	5
		Orifice 3.2mm, Nat. (295)	6
		240007405	Orifice 3.1mm, Nat (045)
2	240007403	Orifice 2.9mm, Nat (120)	3
	240007403	Orifice 2.9mm, Nat (170)	4
3	240007402	Orifice 2.8mm, Nat (070)	2
	355-1-5.04	Orifice #47, LP (045)	1
Orifice #47, LP (096)		2	
Orifice #47, LP (145)		3	
Orifice #47, LP (195)		4	
Orifice #47, LP (245)		5	
Orifice #47, LP (295)		6	
4	355-1-5.06	Orifice #49, LP (120)	3
	355-1-5.06	Orifice #49, LP (170)	4
5	355-1-5.07	Orifice #50, LP (070)	2
6	5611601	Base w/Insul (045)	1
	5611602	Base w/Insul (070, 096)	
	5611604	Base w/Insul (170, 195)	
	5611605	Base w/Insul (245)	
7	5611606	Base w/Insul (295)	1
	325-2-8.01	Combustible Floor Base - 45	
	325-2-8.02	Combustible Floor Base - 70, 96	
	325-2-8.03	Combustible Floor Base - 120, 145	
	325-2-8.04	Combustible Floor Base - 170, 195	
	325-2-8.05	Combustible Floor Base - 245	
8	325-2-8.06	Combustible Floor Base - 295	1

# REPLACEMENT PARTS

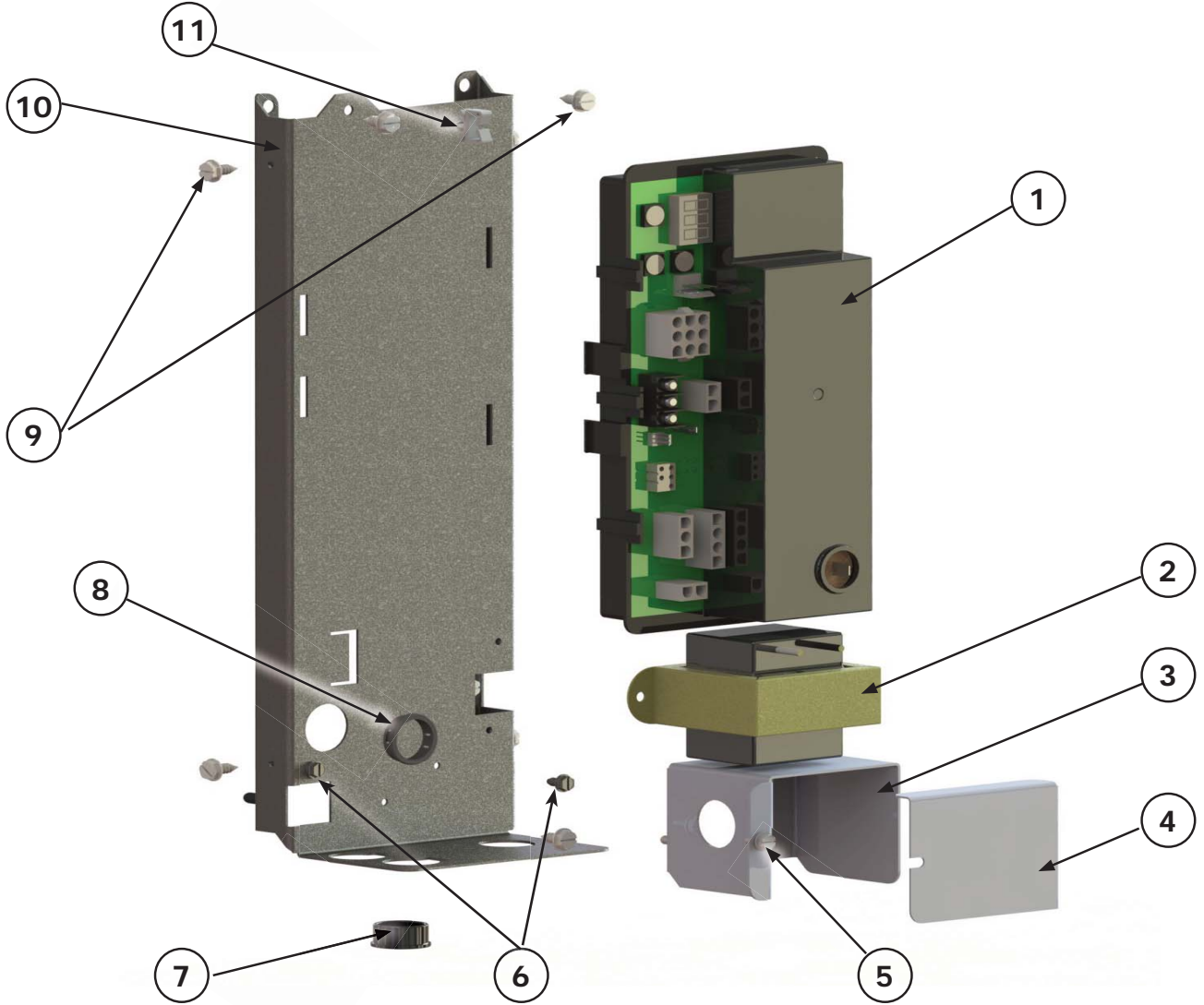
## PIPING & CONTROLS



Item	Part No.	Description	Qty.
1	240008767	60" Circulator Harness	1
2	1260006	Gauge - Theraltimeter	1
3	1635001	Well 3/4 x 1 1/2"	1
4	108000193	Control Cover	1
5	HW-016.03	Drain Valve	1
6	1510001	Pipe - Tee 1-1/4 x 3/4 x 1-1/4	1
7	1310002	Pipe- NPL 1-1/4 x 4-1/2 NPT	1
8	1190001	Pipe Elbow 3/4" 90°	1
9	1310001	Pipe - Adapter 3/4" x 4"	1
10	VR-001.01	Relief Valve 30#	1

## REPLACEMENT PARTS

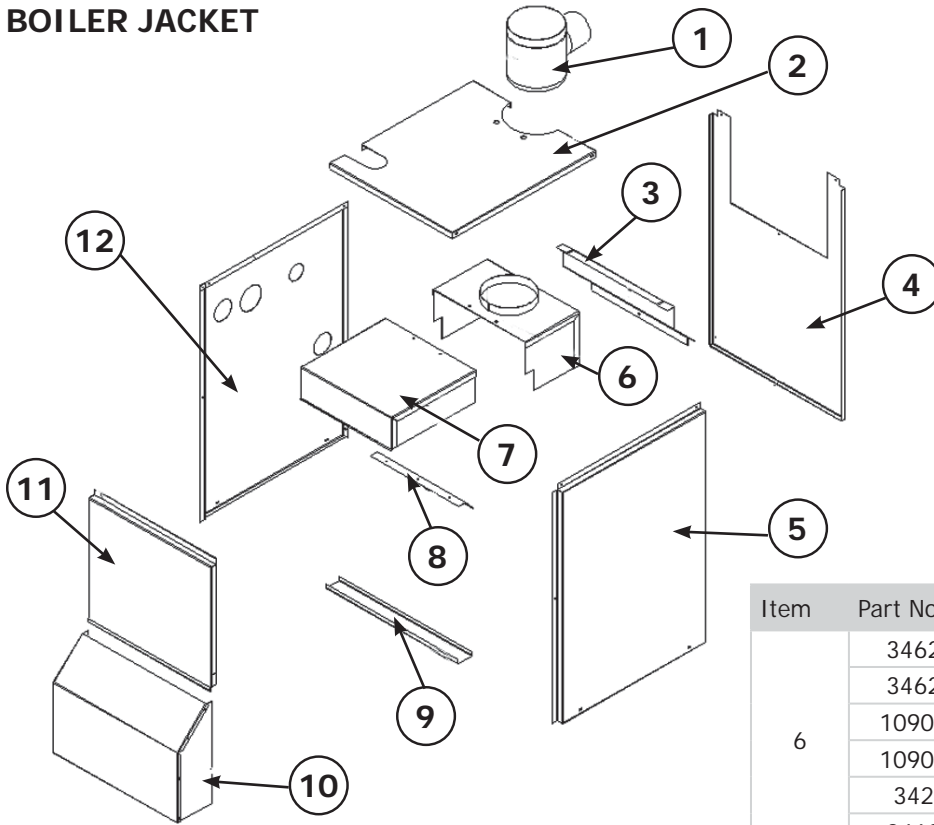
### CONTROL MODULE



ITEM	DESCRIPTION	P/N	QTY.
1	Control Module	240008781	1
2	50 VA Transformer	240008782	1
3	J-Box	109008634	1
4	J-Box Cover	109008335	1
5	Screw# 8 X 1/2 " B Point	20100021	8
6	Ground Screw # 8	HW07701	2
7	Grommet, Plastic 7/8"	14693011	1
8	Grommet, Plastic 7/8"	20600023	1
9	Screw #10 X 1/2" , A Point	14695074	4
10	Control Panel	109008507	1
11	Cable Keeper	EF03601	1
*	Sensor, 24"	240009339	1
*	Sensor Clip	240008013	1
*	Damper Harness	240006309	1
*	Low Volt Harness	240009195	1
*	Line Volt Harness	240009194	1
* Not Shown			

## REPLACEMENT PARTS

### BOILER JACKET

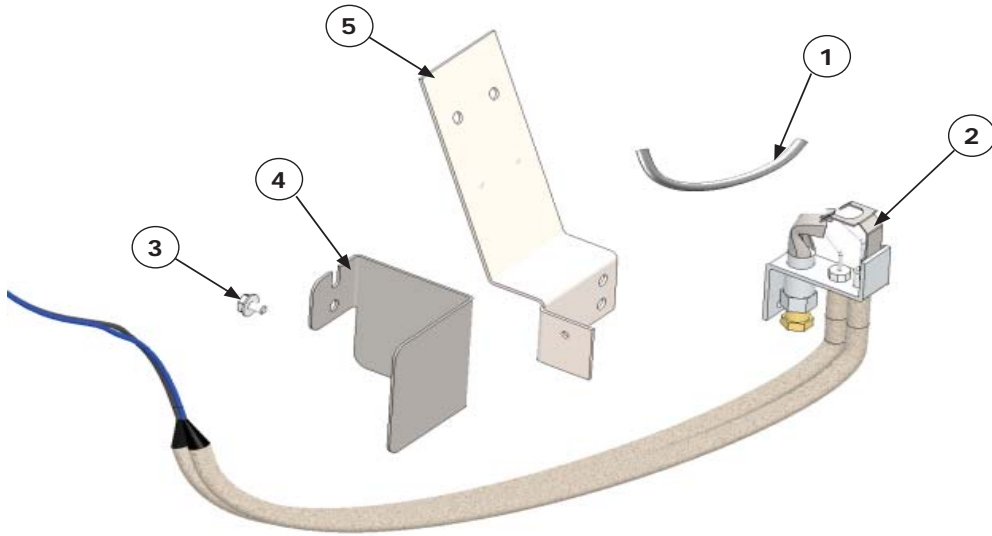


Item	Part No.	Description	Qty.
1	240006936	4" Damper (045)	1
	240006937	5" Damper (070, 096)	
	240006938	6" Damper (120, 145)	
	240006939	7" Damper (170, 195)	
	240006940	8" Damper (245)	
	240006941	9" Damper (295)	
	2	109008692	
109008693		Jkt Top Panel (070, 096)	
109008694		Jkt Top Panel (120, 145)	
109008695		Jkt Top Panel (170, 195)	
109008741		Jkt Top Panel (245)	
109008742		Jkt Top Panel (295)	
3		109008705	Jkt Back to Flue (045)
	109008706	Jkt Back to Flue (070, 096)	
	109008707	Jkt Back to Flue (120, 145)	
	109008708	Jkt Back to Flue (170, 195)	
	109008747	Jkt Back to Flue (245)	
	109008748	Jkt Back to Flue (295)	
	4	109008701	Jkt Back Panel (045)
109008702		Jkt Back Panel (070, 096)	
109008703		Jkt Back Panel (120, 145)	
109008704		Jkt Back Panel (170, 195)	
109008745		Jkt Back Panel(245)	
109008746		Jkt Back Panel (295)	
5		109008700	Jkt Side Right Panel (046-295)

Item	Part No.	Description	Qty.
6	34620601	Draft Hood (045)	1
	34620602	Draft Hood (070, 096)	
	109008554	Draft Hood (120, 145)	
	109008556	Draft Hood (170, 195)	
	3420605	Draft Hood (245)	
	34620606	Draft Hood (295)	
7	34620501	Flue Collector (045)	1
	109008571	Flue Collector (070, 096)	
	109008554	Flue Collector (120, 145)	
	109008555	Flue Collector (170, 195)	
	34620505	Flue Collector (245)	
8	109008573	Flue Collector (295)	1
	3461701	Flue Collector Restrictor (045)	
9	3461702	Flue Collector Restrictor (070)	1
	109008709	Tray (045)	
	109008710	Tray (070, 096)	
	109008711	Tray (120, 145)	
	109008712	Tray (170, 195)	
	109008749	Tray (245)	
	109008750	Tray (295)	
10	109008713	Jkt Front Lower (045)	1
	109008714	Jkt Front Lower (070, 096)	
	109008715	Jkt Front Lower (120, 145)	
	109008716	Jkt Front Lower (170, 195)	
	109008751	Jkt Front Lower (245)	
	109008752	Jkt Front Lower (295)	
	11	109008696	
109008697		Jkt Front Upper (070, 096)	
109008698		Jkt Front Upper (120, 145)	
109008699		Jkt Front Upper (170, 195)	
109008743		Jkt Front Upper (245)	
109008744		Jkt Front Upper (295)	
12		109008509	Jkt Side Left Panel (046-295)

## REPLACEMENT PARTS

### HONEYWELL PILOT KIT



**Note** - Shipped with Natural Gas Configuration.  
Requires field install for LP conversion.

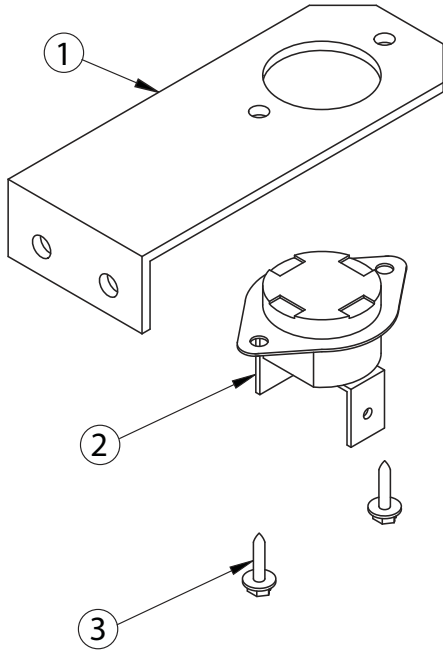
#### Spark Pilot Kit - Natural Gas & LP/Propane 550002585

Item	Description	Qty.
1	Pilot Tubing, 1/8" x 24"	1
2	Natural Gas Pilot	1
3	Bracket Screw	1
4	Pilot Shield	1
5	Pilot Bracket Assembly	1
*	LP Orifice	1
*	Compression Fitting (14662087)	1
* Not Shown		

## REPLACEMENT PARTS

### TEMPERATURE SENSOR BRACKETS/ROLLOUT SWITCH

3 Section Bracket



Temperature Sensor Bracket			
ITEM	PART NO.	DESCRIPTION	QTY.*
1	32611001	2 Section Temp. Sensor Bracket	1
	3262001	3 Section Temp. Sensor Bracket	1
	109008517	4 Section Temp. Sensor Bracket	1
	109008518	5-7 Section Temp. Sensor Bracket	1
2	AQ02101	Control - Fixed Temperature Thermostat (Rollout Switch)	1
3	HW06501	Screw - #6 x 1/4" Hex HD	2

### HEAT EXCHANGERS

#### FULLY ASSEMBLED HEAT EXCHANGERS

912000001	Heat Exchanger (2 Section)
912000002	Heat Exchanger (3 Section)
912000003	Heat Exchanger (4 Section)
912000004	Heat Exchanger (5 Section)
912000005	Heat Exchanger (6 Section)
912000006	Heat Exchanger (7 Section)

### CONVERSION KITS

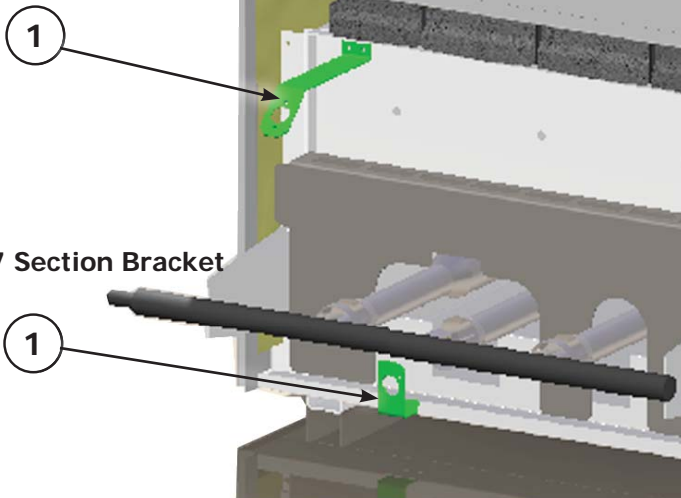
#### NATURAL GAS TO LP

Model	Part No.	Description
15B045	550001279	Kit, Conversion, Natural to LP
15B070	550001280	Kit, Conversion, Natural to LP
15B096	550001281	Kit, Conversion, Natural to LP
15B120	550001282	Kit, Conversion, Natural to LP
15B145	550001283	Kit, Conversion, Natural to LP
15B170	550001284	Kit, Conversion, Natural to LP
15B195	550001285	Kit, Conversion, Natural to LP
15B245	550001286	Kit, Conversion, Natural to LP
15B295	550001287	Kit, Conversion, Natural to LP

#### LP TO NATURAL GAS

Model	Part No.	Description
15B045	550001270	Kit, Conversion, LP to Natural
15B070	550001271	Kit, Conversion, LP to Natural
15B096	550001272	Kit, Conversion, LP to Natural
15B120	550001273	Kit, Conversion, LP to Natural
15B145	550001274	Kit, Conversion, LP to Natural
15B170	550001275	Kit, Conversion, LP to Natural
15B195	550001276	Kit, Conversion, LP to Natural
15B245	550001277	Kit, Conversion, LP to Natural
15B295	550001278	Kit, Conversion, LP to Natural

4 Section Bracket



5-7 Section Bracket