



16 Series

Gas-Fired Steam Boiler



The Pennco 16 Series Boiler is an Affordable Gas-Fired Steam Heating Solution

Quality Heat Exchanger Design –

The 16 Series features a dependable cast iron heat exchanger with cast iron push nipples. The sections and push nipples expand at the same rate when heated. By using similar materials instead of less expensive gaskets, or steel push nipples, the boiler maintains a water tight seal.

Efficiency –

The 16 Series provides an annual fuel utilization efficiency of up to 82.7% as certified by the US Department of Energy.

Easy Installation and Maintenance –

The 16 Series features an integral Draft Hood and Vent Damper. Its low profile, compact design makes it ideal for low clearance installations.

Features CycleGard CG400 LWCO –

CycleGard low water cut-off is equipped with an Intermittent Level Test. This important feature adds protection against false signals that can be caused by foam and volatile water conditions inside the boiler. The Intermittent Level Test removes power from the burner at preset intervals. During the test, foam dissipates and the water level stabilizes – allowing CycleGard to monitor the true water level in the boiler assuring safe and accurate operation.

Warranty –

10 Year Limited Heat Exchanger Warranty

Pennco SILVER makes Simple Comfort, Affordable.

16 Series

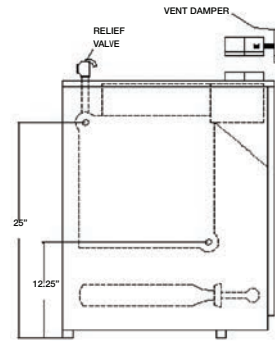
Gas-Fired Steam Boiler

Standard Equipment:

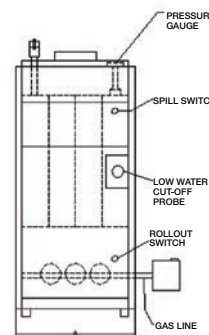
- Assembled Boiler with insulated Jacket
- Completely installed and wired gas control system consisting of:
 - Titanium Composite Burners
 - Gas Manifold with Orifices
 - Automatic Redundant Combination Gas Valve, 24 Volt, with Pilot Filter and Regulator
 - Intermittent Pilot Control
 - Continuous Retry 100% Shut-Off
 - Combination Pilot Burner/Electrode/Flame Sensor and Integral Draft Diverter
- 24 Volt Transformer
- Flame Roll-Out Safety Shut-Off Fuse Link (Roll-Out Switch) with Spare Fuse Link included. Blocked Vent Safety Shut-Off Manual Reset Disc Thermostat (Spill Switch)
- Electronic Low Water Cut-Off with 3/4" Probe
- Pressure Limit Control
- Steam Pressure Gauge
- Glass Water Level Gauge
- 3/4" Boiler Drain Valve
- 15 psi ASME Pop Safety Valve
- (2) 2 1/2" Supply Tappings
- (2) 2 1/2" Return Tappings
- (2) 2 1/2" Square Head Pipe Plugs – to plug unused supply and return tappings.

Optional:

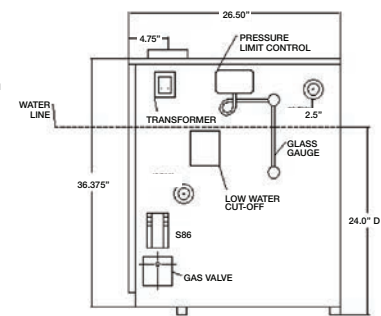
- Propane Conversion Kits Available
- Combustible Floor Plate
- Electronic Water Feeder



LEFT SIDE



FRONT



RIGHT SIDE

Specifications: (All ratings and specifications subject to change)

Model	Input Rate Nat./LP (MBH) ⁽¹⁾	Heating Capacity Nat./LP (MBH) ⁽¹⁾	Net AHRI Rating Nat./LP ⁽¹⁾			No. of Sec.	Vent Pipe Size	AFUE %
			Steam*	Steam (Sq. Ft.)	Steam (MBH)			
1603HSID	75/70	62/58	1.33	196/183	47/44	3	5"	82.7 / 82.7
1604HSID	112/105	91/85	1.33	283/267	68/64	4	6"	82.0 / 80.4
1605HSID	150/140	122/114	1.33	383/358	92/86	5	6"	82.0 / 80.6
1606HSID	187/175	153/143	1.33	479/446	115/107	6	7"	82.0 / 80.9
1607HSID	225/210	183/171	1.33	571/533	137/128	7	7"	82.0 / 81.1
1608HSID	262/245	214/200	1.33	671/625	161/150	8	7"	82.0 / 81.3
1609HSID	299/280	245/229	1.33	767/717	184/172	9	7"	82.0 / 81.5

(1) MBH = 1,000 Btuh. Btuh = British Thermal Unit Per Hour.

- For altitudes above 2,000 ft. reduce input rate 4% for each 1,000 ft. above sea level.
- Heating Capacity is based on DOE (Department of Energy) test procedure.
- *Net AHRI steam ratings shown are based on a piping and pickup allowance of 1.333.
- Base selection of boiler size on "Net AHRI Rating" being equal to or greater than installed radiation in square feet. Consult manufacturer before selecting a boiler for installations having unusual piping and pickup requirements, such as intermittent system operation, exhaust piping systems, etc.



2201 Dwyer Avenue, Utica, New York 13501
 Phone: 315-797-1310 • Fax: 866-432-7329
 E-mail: info@ecrinternational.com
 Web: www.pennco boilers.com

USA Contractor Assistance:
800-325-5479