

PENNCO

SILVER

CAST IRON BOILERS

16 Series

Gas-Fired Steam Boilers



The Pennco 16 Series Boiler is an Affordable Gas-Fired Steam Heating Solution

Quality Heat Exchanger Design:

- The 16 Series features a dependable cast iron heat exchanger with cast iron push nipples. The sections and push nipples expand at the same rate when heated. By using similar materials instead of less expensive gaskets or steel push nipples, the boiler maintains a water tight seal.

Efficiency:

- The 16 Series provides an annual fuel utilization efficiency (AFUE) of up to 82.7% as certified by the US Department of Energy.

PRODUCT FEATURES

Easy Installation and Maintenance:

- The 16 Series features an integral Draft Hood and Vent Damper. Its low profile, compact design makes it ideal for low clearance installations.

Features CycleGard CG400 LWCO:

- CycleGard low water cut-off is equipped with an Intermittent Level Test. This important feature adds protection against false signals that can be caused by foam and volatile water conditions inside the boiler. The Intermittent Level Test removes power from the burner at preset intervals. During the test, foam dissipates and the water level stabilizes - allowing CycleGard to monitor the true water level in the boiler assuring safe and accurate operation.

Warranty:

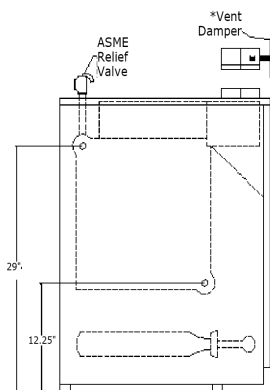
- 10 Year Limited Heat Exchanger



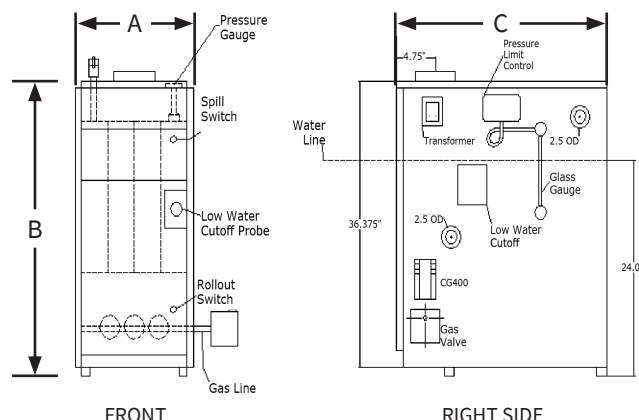
Simple, Comfortable, Affordable.

www.pennco boilers.com
PN 240009892 Rev. [05/16/23]

CONNECTIONS	
Supply Tapping	(2) 2 1/2"
Return Tapping	(2) 2 1/2"
Gas Inlet	1/2" NPT (75/112/150) 3/4" NPT (187/225/262/299)
ELECTRICAL	
120 V ac, 60 hertz, 1 phase, less than 12 amps (15 amp circuit recommended)	
STANDARD EQUIPMENT	
<p>Assembled Boiler with Insulated Jacket</p> <p>Completely installed and wired gas control system: Titanium Composite Burners, Gas Manifold with Orifices, Automatic Redundant Combination Gas valve, 24 Volt, with Pilot Filter and Regulator, Intermittent Pilot Control, Continuous Retry 100% Shut-Off, Combination Pilot Burner/Electrode/Flame Sensor and Integral Draft Diverter.</p> <p>24 Volt Transformer, Flame Roll-Out Safety Shut-Off Fuse Link (Roll-Out Switch) with Spare Fuse Link included. Blocked Vent Safety Shut-Off Manual Reset Disc Thermostat (Spill Switch), Electronic Low Water Cut-Off with 3/4" Probe, Pressure Limit Control, Steam Pressure Gauge, Glass Water Level Gauge, 3/4" Boiler Drain Valve, 15 psi ASME Pop Safety Valve, (2) 2 1/2" Square Head Pipe Plugs - to plug unused tappings.</p>	
OPTIONS	
<p>Natural Gas to Propane Conversion Kit Available (3 Section Only)</p> <p>Electronic Water Feeder</p>	



LEFT SIDE



FRONT

RIGHT SIDE

AHRI CERTIFIED RATINGS							DIMENSIONS			
MODEL	Input MBH ⁽¹⁾	Heating Capacity MBH ⁽¹⁾	Net Steam MBH ⁽²⁾	Net Steam SQ. FT.	Efficiency AFUE%	Flue Diameter	- A - Width	- B - Height	- C - Depth	Weight Lbs.
1603HSID ⁽³⁾	75	62	47	196	82.7	5"	11 1/4"	36 3/8"	26 1/2"	297
1604HSID	112	91	68	283	82.0	6"	14 1/2"	36 3/8"	26 1/2"	368
1605HSID	150	122	92	383	82.0	6"	17 3/4"	36 3/8"	26 1/2"	440
1606HSID	187	153	115	479	82.0	7"	21"	36 3/8"	26 1/2"	512
1607HSID	225	183	137	571	82.0	7"	24 1/4"	36 3/8"	26 1/2"	584
1608HSID	262	214	161	671	82.0	7"	27 1/2"	36 3/8"	26 1/2"	659
1609HSID	299	245	184	767	82.0	7"	30 3/4"	36 3/8"	26 1/2"	736

(1) Input rating for sea level to 2,000 ft. (610m) above sea level. United States, over 2000 ft (610m) above sea level. Reduce input rate 4% for every 1000 ft (304m) above sea level.

(2) Net AHRI Steam Rating shown based on piping and pickup allowance of 1.333. Consult manufacturer before selecting boilers for installation having unusual piping and pickup requirements, such as intermittent system operation, extensive piping systems, etc.

(3) Add Model number suffix 'P' for Propane Gas - 3 Section Only.



ECR International, Inc. 2201 Dwyer Avenue, Utica, NY 13501
Tel. 800 253 7900
www.ecrinternational.com

www.pennco boilers.com

All specifications subject to change without notice.
©2023 ECR International, Inc.
PN 240009892 Rev. [05/16/23]